

Barbie™

Petal MP3 Player™ with Photo Viewer



OWNER'S MANUAL

BAR900

Barbie and associated trademarks and trade dress are owned by, and used under license from, Mattel, Inc. ©2007 Mattel, Inc. All Rights Reserved.

SAFETY INSTRUCTIONS

1. Read these instructions. Keep these instructions. Follow all instructions. Heed all warnings.
2. Do not use this unit near water.
3. Clean only with a dry cloth. Disconnect the MP3 player from the computer before cleaning.
4. Do not block any ventilation openings. Install in accordance with manufacturer's instructions.
5. Do not install near any heat sources such as radiators, heat registers, stoves or other apparatus (including amplifiers) that produce heat.
6. Only use attachments/accessories specified by the manufacturer.
7. Disconnect the MP3 player from the computer during lightning storms or when unused for long periods of time.
8. Refer all servicing to qualified service personnel. Servicing is required when the unit has been damaged in any way, such as the following: liquid has been spilled or objects have fallen into the unit and/or the unit has been exposed to rain or moisture, does not operate normally, has changed its performance or has been dropped. Do not attempt to service this product yourself as opening or removing covers may expose you to dangerous voltage or other hazards.
9. This unit should not be exposed to dripping or splashing water and no object filled with liquids such as vases should be placed near the unit. Never push objects of any kind into this unit through any openings.
10. Use replacement parts as specified by the manufacturer.
11. Upon completion of any service or repairs to this product, ask the service technician to perform safety checks.
12. To avoid electric shock and malfunction, avoid using this device in a place far from water or humidity.
13. Do not use this device in extreme temperatures, dust or humidity.
14. Never disassemble, attempt to fix or modify the device personally. That may cause electric shock or void the warranty.
15. Try not to drop the device. The surface of the device may get scratched or the device may malfunction.
16. Please keep this device away from strong magnetic fields, such as televisions, monitors or speakers, which may cause damage.
17. Never disconnect the device from the computer while it is transferring data through the USB cable. If so, the data may be damaged.

SAFETY INSTRUCTIONS

FCC WARNING:

This equipment may generate or use radio frequency energy. Changes or modifications to this equipment may cause harmful interference unless the modifications are expressly approved in the instruction manual. The user could lose the authority to operate this equipment if an unauthorized change or modification is made.

FCC INFORMATION:

This equipment has been tested and found to comply with the limits for a Class B digital device, pursuant to Part 15 of the FCC Rules. These limits are designed to provide reasonable protection against harmful interference in a residential installation. This equipment generates, uses and can radiate radio frequency energy and, if not installed and used in accordance with the instructions, may cause harmful interference to radio communications. However, there is no guarantee that interference will not occur in a particular installation. If this equipment does cause harmful interference to radio or television reception, which can be determined by turning the equipment off and on, the user is encouraged to try to correct the interference by one or more of the following measures:

- Reorient or relocate the receiving antenna.
- Increase the separation between the equipment and receiver.
- Connect the equipment into an outlet on a circuit different from that to which the receiver is connected.
- Consult the dealer or an experienced radio/TV technician for help.

COPYRIGHT:

- Distributing copies of MP3, WMA with DRM or WAV tracks without permission is a violation of international copyright laws.

SAFETY:

- Vibration experienced during walking or exercising will not affect the player. However, dropping the player or dropping a heavy object on the player may result in damage or sound distortion.
- Avoid spilling any liquid onto or into the player.
- Do not leave the player in a location near heat sources; in a location subject to direct sunlight, excessive dust, sand, moisture, rain or mechanical shock; on an unlevel surface; or in a car with the windows closed during periods of excessive heat.

ROAD SAFETY:

- Do not use headphones while driving, cycling or operating any motorized vehicle. It may create a traffic hazard and it is illegal in some areas. It can be potentially dangerous to play your headset at a high volume while walking, especially at pedestrian crossings. You should exercise extreme caution or discontinue use in potentially hazardous situations.

Dear Customer:

Selecting fine audio equipment such as the unit you've just purchased is only the start of your musical enjoyment. Now it's time to consider how you can maximize the fun and excitement your equipment offers. This manufacturer and the Electronic Industries Association's Consumer Electronics Group want you to get the most out of your equipment by playing it at a safe level. One that lets the sound come through loud and clear without annoying blaring or distortion and, most importantly, without affecting your sensitive hearing. Sound can be deceiving. Over time your hearing "comfort level" adapts to higher volumes of sound. So what sounds "normal" can actually be loud and harmful to your hearing. Guard against this by setting your equipment at a safe level BEFORE your hearing adapts.

To establish a safe level:

- Start your volume control at a low setting.
- Slowly increase the sound until you can hear it comfortably and clearly, and without distortion.

Once you have established a comfortable sound level:

- Set the dial and leave it there.

Taking a minute to do this now will help to prevent hearing damage or loss in the future. After all, we want you listening for a lifetime.

We Want You Listening For A Lifetime

Used wisely, your new sound equipment will provide a lifetime of fun and enjoyment. Since hearing damage from loud noise is often undetectable until it is too late, this manufacturer and the Electronic Industries Association's Consumer Electronics Group recommend you avoid prolonged exposure to excessive noise. This list of sound levels is included for your protection.

Decibel

<u>Level</u>	<u>Example</u>
30	Quiet library, soft whispers
40	Living room, refrigerator, bedroom away from traffic
50	Light traffic, normal conversation, quiet office
60	Air conditioner at 20 feet, sewing machine
70	Vacuum cleaner, hair dryer, noisy restaurant
80	Average city traffic, garbage disposals, alarm clock at two feet

THE FOLLOWING NOISES CAN BE DANGEROUS UNDER CONSTANT EXPOSURE:

90	Subway, motorcycle, truck traffic, lawn mower
100	Garbage truck, chain saw, pneumatic drill
120	Rock band concert in front of speakers, thunderclap
140	Gunshot blast, jet engine
180	Rocket launching pad



Information courtesy of the Deafness Research Foundation.

Emerson Radio Corp. has produced this audio product under license from Mattel. We have taken great care to make sure your unit was in perfect working order when it left our factory.

It has been designed to give you many years of enjoyment and trouble-free operation. Read this manual before operating this unit to become familiar with its features. In the event you require technical assistance, please contact the Emerson Radio Customer Service hotline at 1-800-898-9020. Retain this manual for future reference.



WARNING

Choking Hazard—Small Parts and Packaging Materials. Not for children under 5 years.

- All materials for fastening or packing purposes are not part of the unit and should be discarded for children's safety.
- Please keep all information for future reference.
- This is not a toy.

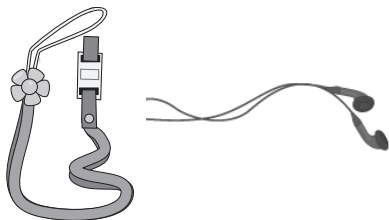
NOTES:

- Please avoid using this unit in places of high temperature or humidity over prolonged periods of time as damage may occur.
- Exposure to direct sunlight in places such as car interiors may cause the unit to become warped and/or lead to malfunctioning.
- Avoid using or storing this unit in dusty or sandy locations.

ACCESSORIES INCLUDED



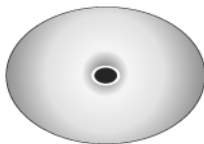
Main Unit



Lanyard and Earbuds



USB Cable

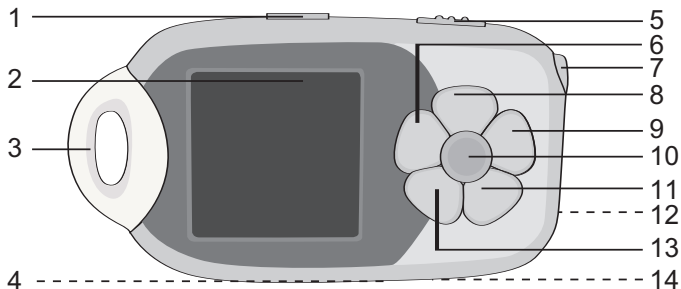


Installation CD



Quick Start Guide

LOCATION OF CONTROLS



1. Menu **M** Button
2. Display
3. Lanyard Hole
4. RESET Access (Bottom of Unit)
5. Hold **⏏** Switch
6. Skip/Search **⏮** Button
7. Headphones **🎧** Jack
8. Play/Pause **▶||**/Power Button
9. Skip/Search **⏭** Button
10. GEMSTONE FUN (Record) Button
11. Volume - Button
12. USB **🔌** Jack (Side of Unit, Under Cover)
13. Volume + Button
14. MIC (Microphone)

POWER SOURCE

RECHARGEABLE BATTERY OPERATION

This unit comes with a built-in Lithium Ion rechargeable battery. It is recommended that the battery be fully charged before using for the first time. When the battery indicator at the top right of the display becomes empty, recharge the battery. Below are the icons which will display the rechargeable battery status:



FULL



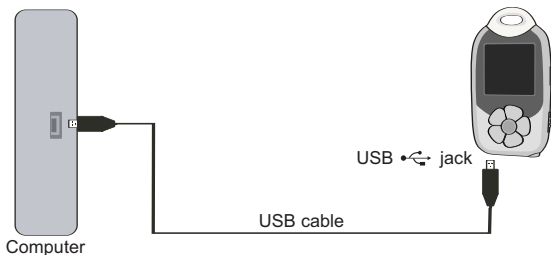
50%



EMPTY

TO CHARGE THE BATTERY WITH YOUR COMPUTER

1. Connect the USB Cable to the USB port on the computer; connect the cable to the USB port on the MP3 player. Press the Play/Pause ►||/Power button; the battery indicator at the top right of the display will blink to indicate it is being charged.
2. When the battery is fully charged, the battery indicator will be full.



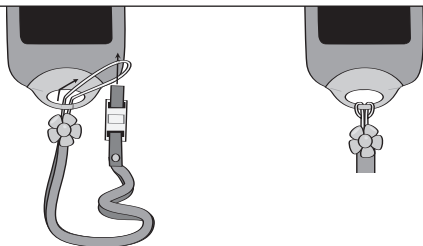
NOTES:

- The unit must be charged for four hours for the first time. Subsequent charges will take approx. 2-3 hours.
- When fully charged, the unit can playback for approx. 16 hours when the backlight screen is turned off.

USING THE LANYARD

TO ATTACH THE LANYARD

1



Insert the cord through the Lanyard hole.

Loop the cord around the locking piece and pull until tightened.

DOWNLOADING AND TRANSFERRING FILES

SUPPORTED OPERATING SYSTEMS

This unit is compatible with the following Operating Systems:
Windows ME, 2000, XP and Vista or Mac 10.2.6 or higher

Please refer to the following pages to learn how to:

- transfer files
- convert music on an audio CD into MP3 or WMA format using Windows Media Player 10
- transfer MP3/WMA files and WMA files with DRM 9 or 10 using Windows Media Player 10
- safely remove your unit from the computer.

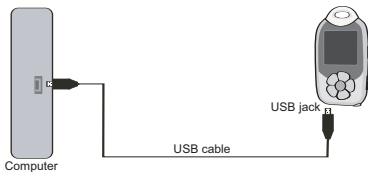
NOTE: Visit www.Microsoft.com to download the corresponding Windows Media Player for your computer.

TRANSFERRING FILES

You can download digital music files from the Internet or use encoding software to convert music that you have on an audio CD into MP3 or WMA format. Once these files are stored on your computer you can easily copy them to your player.

For Windows XP, if you have Windows Media Player 10, you can transfer music files (MP3, WMA, WMA files with DRM 9 or 10) to the

player through the "Sync" function of Windows Media Player 10. Connect this unit to the USB port on your computer using the USB cable.



"MTP Player" will appear in your "My Computer" folder which indicates the player is connected. Then, follow the procedure on page 12 to transfer music files to the player.

For Windows ME, 2000, Vista or Windows XP (without Windows Media Player 10), transfer music files as follows:

1. Connect your player to the USB port on your computer using the USB cable as shown above.
2. A "Removable Disk" window will automatically pop-up on your computer screen.
3. To add more files and songs to your player, simply drag and drop MP3 or WMA files/folders from anywhere on your computer into the "Removable Disk" window.

IMPORTANT: A WMA file with DRM 9 or 10 will not play back if you directly drag and drop it into the "Removable Disk" window. You must use Windows Media Player 10 to transfer copy-protected files as described on page 12.

TRANSFERRING AUDIO FILES TO YOUR DIGITAL AUDIO PLAYER USING A MAC COMPUTER

Make sure to use a Mac computer with an operating system of 10.2.6 or higher to transfer audio files.

1. Turn on your computer.
2. Turn on your digital audio player.
3. Connect the smaller end of the cable to the USB jack on the player and the larger end of the cable to the USB port on your Mac.
4. Your computer will automatically recognize your player and mount a hard disk icon onto your desktop.
5. Locate the folder where your audio files are stored on your computer's hard drive. Simply drag and drop the audio files onto the mounted hard disk drive icon of your digital audio player located on your desktop.
6. After you have finished your transfer, put away the digital audio player hard disk icon(s) by: dragging it to the Trash icon; Control-clicking its icon and choosing Eject from the File menu; selecting Eject from the File drop-down menu located at the top of your screen; or, by using the keyboard shortcuts by selecting the digital audio player hard disk icon and pressing the Command-E keys.
7. Your player is ready to play the files you transferred.

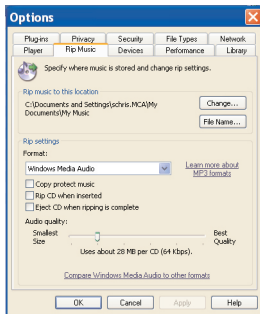
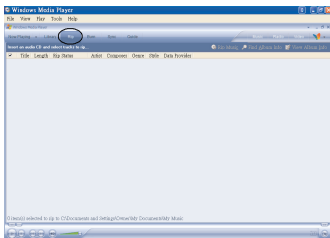
DOWNLOADING AND TRANSFERRING FILES (CONT.)

For Windows XP, you can also utilize Windows Media Player 10 software to convert music on an audio CD into MP3 or WMA format as follows:

1. Open the Windows Media Player 10 Browser, then click on the “Rip” icon on the top tool bar. Insert a Music CD into the CD-Rom drive of your computer.

NOTE: For Windows ME, 2000 or Vista, please use the corresponding Windows Media Player for your computer to convert music on an audio CD into MP3 or WMA format.

2. Click on the “Tools” menu option at the top menu bar, then click on “Options”; the Option setting menu will appear. Click on Rip Music and set the Rip Music to the desired location on your computer. Then, set the desired format for the newly ripped music (MP3 format or Windows Media Audio format). Adjust the audio quality as desired. When finished, click “OK” to confirm the settings.
3. Click on the “Rip Music” icon to start ripping the music to your computer.
4. When the music tracks are ripped; connect the player to your computer. Open the “Removable Disk” window and open the ripped music location window.
5. To add the transferred/ripped music files/songs to your player simply drag and drop the MP3 and/or WMA files into the “Removable Disk” window.
6. When the files are finished loading into the player, you can follow the “Safely Remove Hardware” procedure as shown on page 13.

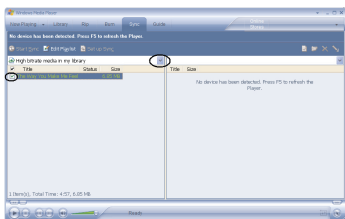
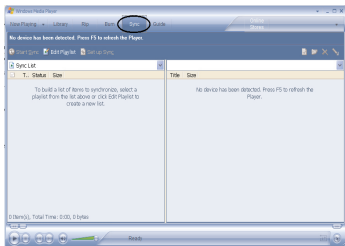


DOWNLOADING AND TRANSFERRING FILES (CONT.)

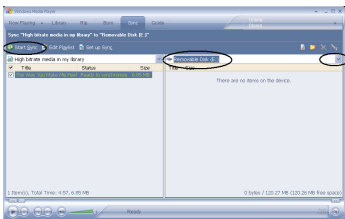
TRANSFERRING MP3/WMA FILES AND WMA FILES WITH DRM 9 or 10 USING WINDOWS MEDIA PLAYER 10 (FOR WINDOWS XP ONLY)

To transfer MP3 files/WMA files/WMA files with DRM 9 or 10 to the player, follow the procedure described below using Windows Media Player 10. Before beginning the procedure please turn the unit on and connect the unit to the computer as previously described.

1. Open the “Windows Media Player Browser 10” and click on “Sync”.
2. Click on the “Sync List” pull-down menu to locate the music files you wish to download. Then make sure to tick the box next to the files.
3. Select the Portable Device (“MTP Player”) that you want to copy to from the right side drop-down menu. Click “Start Sync” to start transferring music files to the player.
4. After finished transferring all the desired files to your unit, you can remove your unit from the computer.



NOTE: There will be two folders, Data and Media, within “MTP Player”. The music files can be downloaded to any folder. But make sure to download photos to the folder named Photo within the Data folder. Otherwise, you will not be able to view your photos on this unit.



SAFELY REMOVE HARDWARE

SAFELY REMOVING YOUR PLAYER FROM THE COMPUTER (FOR WINDOWS ME OR 2000)

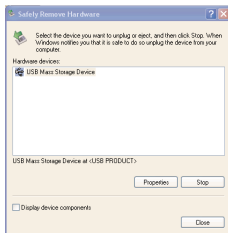
NOTE: To avoid damage to your player or data loss, always follow the procedure listed below before disconnecting your player from the USB port on your computer.

Using your mouse, double click the "Safely Remove Hardware" icon on the task bar.



'Safely Remove Hardware' icon

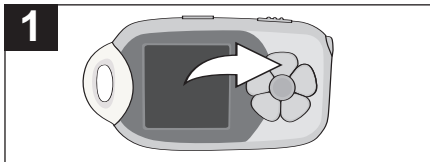
From the "Safely Remove Hardware" window (shown lower right), select "USB Mass Storage Device" and click the "Stop" button. The "Stop a Hardware Device" window will pop-up. Click "OK". When the "Safe to Remove Hardware" window is displayed, you may remove the player from the USB cable or remove the USB cable from the computer.



NOTE:

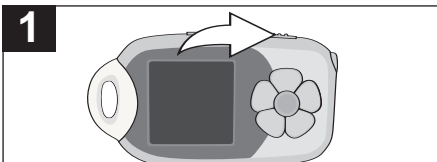
- If the "Safely Remove Hardware" icon is not displayed on the task bar, please double-click on My Computer. Right-click on "Removable Disk" and left-click on "Eject". Then it is safe to remove the player from the computer.
- If you are using Windows XP and Windows Media Player 10 software is already installed, then you do not need to follow the above "Safely Remove Hardware" procedure.


TURNING THE POWER ON/OFF



Turn the unit on by pressing the Play/Pause ►||/Power button; the Barbie opening screen will appear in the display temporarily. Then the menu will appear in the display. To turn the unit off, press and hold the Play/Pause ►||/Power button; a Barbie screen will appear in the display and the unit will turn off.

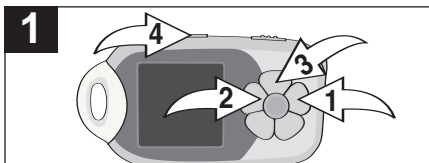
HOLD SWITCH



With the unit on, slide the HOLD switch to the Lock position (right); a small Lock icon  will appear in the display and no buttons will function. This is useful when you do not want the track changed by accidentally pressing a button. Slide the HOLD switch to the Unlock position (left) to cancel the Lock function.

NOTE: You will not be able to turn the unit on or off if the Hold feature is activated.

NAVIGATING THE MENU

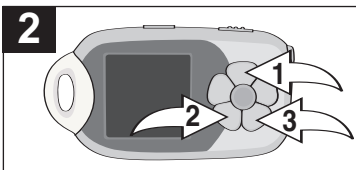
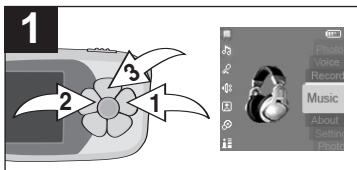


1

With the unit on (see page 14), use the Skip/Search **▶▶** ❶ or **◀◀** ❷ button to navigate through the menus (i.e, in the Main Menu, select between Music, Record, Voice, Photo, Settings or About). Then, press the Play/Pause **▶||**/Power button ❸ to confirm. Press the Menu **M** button ❹ repeatedly to return to the previous/Main menu.

OPERATION (CONTINUED)

TO LISTEN TO MP3s/WMA's

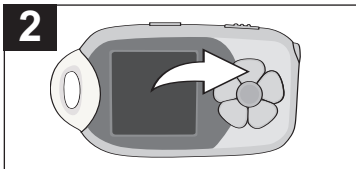
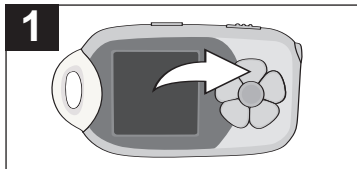


With the unit on (see page 14), use the Skip/Search **▶▶** **1** or **◀◀** **2** button to navigate to Music, followed by the Play/Pause **▶||**/Power button **3** to confirm.

Press the Play/Pause **▶||**/Power button **1** to start playback. Press the Volume + **2** or - **3** buttons to increase or decrease the volume.

NOTE: See pages 9-12 for information on uploading MP3 and WMA files to this unit.

TO PAUSE PLAYBACK

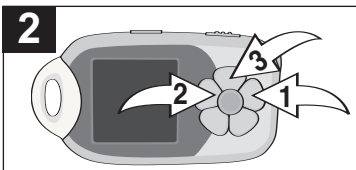
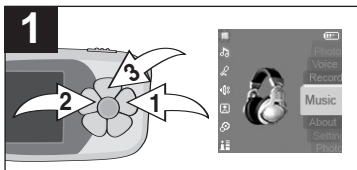


During playback, if you wish to pause the file momentarily, press the Play/Pause **▶||**/Power button; playback will pause and the timer will stop counting.

Press the Play/Pause **▶||**/Power button again to resume playback; the sound will return and the timer will start counting again.

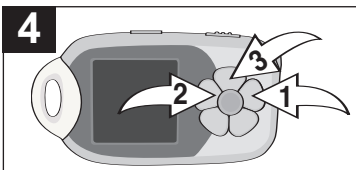
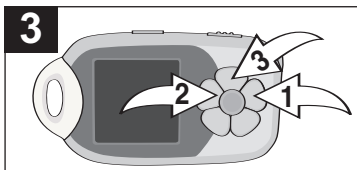
OPERATION (CONTINUED)

TO SELECT/BROWSE THROUGH THE FILES



With the unit on (see page 14), use the Skip/Search **▶** ❶ or **◀** ❷ button to navigate to Music, followed by the Play/Pause **▶||**/Power button ❸ to confirm.

Use the Skip/Search **▶** ❶ or **◀** ❷ button to navigate to List, followed by the Play/Pause **▶||**/Power button ❸ to confirm.



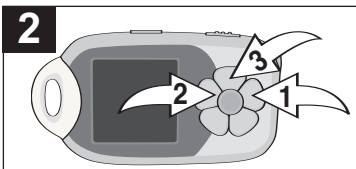
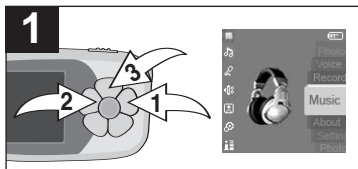
Use the Skip/Search **▶** ❶ or **◀** ❷ button to navigate to the desired file, followed by the Play/Pause **▶||**/Power button ❸ to confirm; a pop-up menu will appear.

Select the desired option from the pop-up menu: Play (to begin playback), Delete (to delete your selection) or Cancel (to cancel your selection) by pressing the Skip/Search **▶** ❶ or **◀** ❷ button, followed by the Play/Pause **▶||**/Power button ❸ to confirm.

NOTE: If you select "Delete", you can then select "Yes", "No" or "Cancel" by pressing the Skip/Search **▶** or **◀** button, followed by the Play/Pause **▶||**/Power button to confirm.

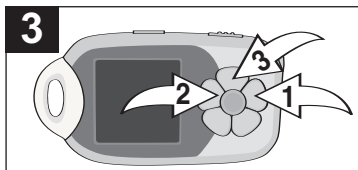
OPERATION (CONTINUED)

SETTING THE PLAY MODE



With the unit on (see page 14), use the Skip/Search **▶▶** ❶ or **◀◀** ❷ button to navigate to Music, followed by the Play/Pause **▶||**/Power button ❸ to confirm.

Use the Skip/Search **▶▶** ❶ or **◀◀** ❷ button to navigate to Play Mode, followed by the Play/Pause **▶||**/Power button ❸ to confirm.

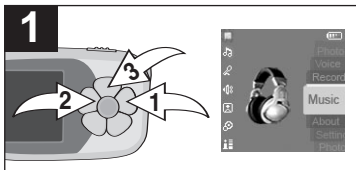


Use the Skip/Search **▶▶** ❶ or **◀◀** ❷ button to select the desired Play Mode, followed by the Play/Pause **▶||**/Power button ❸ to confirm.

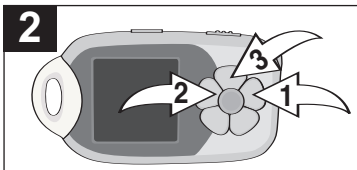
Normal:	Normal playback
Repeat One:	Repeats the current file
Repeat All:	Repeats all of the files
Shuffle:	Randomly plays the files once and then stops
Shuffle All:	Randomly plays all the files repeatedly

OPERATION (CONTINUED)

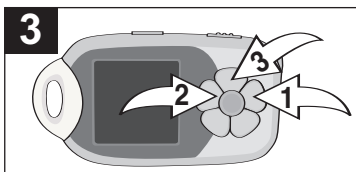
SETTING THE EQUALIZER



With the unit on (see page 14), use the Skip/Search **▶▶** ❶ or **◀◀** ❷ button to navigate to Music, followed by the Play/Pause **▶||**/Power button ❸ to confirm.

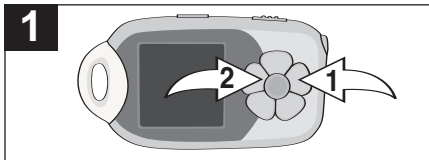


Use the Skip/Search **▶▶** ❶ or **◀◀** ❷ button to navigate to Equalizer, followed by the Play/Pause **▶||**/Power button ❸ to confirm.



Use the Skip/Search **▶▶** ❶ or **◀◀** ❷ button to select the desired Equalizer setting (Normal, Rock, Jazz, Classical or Pop) followed by the Play/Pause **▶||**/Power button ❸ to confirm.

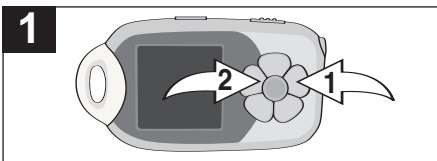
FORWARD/REVERSE SKIP



During playback, press the Skip/Search ►► button ❶ to advance the player to the beginning of the next file. Press the Skip/Search ►► button ❶ repeatedly to advance the player to higher-numbered files.

During playback, press the Skip/Search ◄◄ button ❷ to move the player back to the beginning of the previous file. Press the Skip/Search ◄◄ button ❷ repeatedly to move the player back to lower-numbered files.

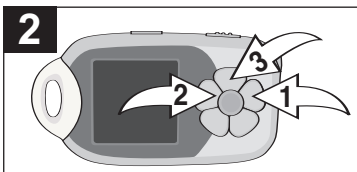
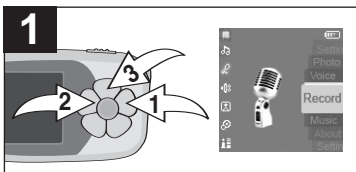
HIGH-SPEED MUSIC SEARCH



During playback, press and hold the Skip/Search ►► ❶ or ◄◄ ❷ button to move the player forward or backward within a file to locate a specific musical passage. The player will move forward or backward at high speed as long as the button is held. When you release the button, normal playback will resume.

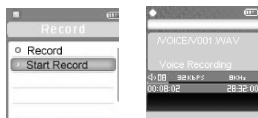
OPERATION (CONTINUED)

TO CREATE A VOICE RECORDING



With the unit on (see page 14), use the Skip/Search **▶▶** ① or **◀◀** ② button to navigate to Record, followed by the Play/Pause **▶||**/Power button ③ to confirm.

Use the Skip/Search **▶▶** ① or **◀◀** ② button to navigate to Start Record, followed by the Play/Pause **▶||**/Power button ③ to confirm.

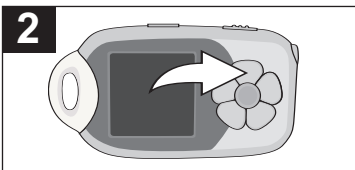
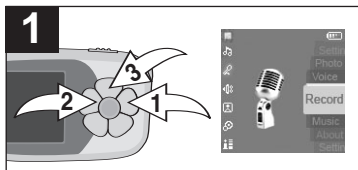


NOTES:

- Speak/sing into the MIC (microphone) on the bottom of the unit while recording.
- To stop recording, press the GEMSTONE FUN (Record) button.
- You can also create a voice recording at any time without entering the Record menu. Simply press and hold the GEMSTONE FUN (Record) button, as shown on page 30.
- The voice recording will be saved as a file named Vxxx.WAV (For example, V001.WAV) in the Voice folder.
- The screen will display a message indicating the memory is full when no memory is left.

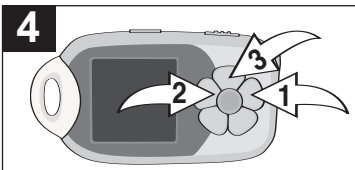
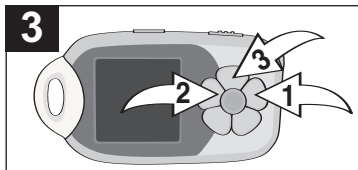
OPERATION (CONTINUED)

SETTING THE RECORDING OPTIONS



With the unit on (see page 14), use the Skip/Search ►► ❶ or ◀◀ ❷ button to navigate to Record, followed by the Play/Pause ►►/Power button ❸ to confirm.

Press the Play/Pause ►►/Power button to select Record.



FORMAT: Use the Skip/Search ►► ❶ or ◀◀ ❷ button to navigate to Format, followed by the Play/Pause ►►/Power button ❸ to confirm.

Use the Skip/Search ►► ❶ or ◀◀ ❷ button to select a Format option (IM ADPCM, MS ADPCM or PCM), followed by the Play/Pause ►►/Power button ❸ to confirm.

RATE: Use the Skip/Search ►► ❶ or ◀◀ ❷ button to navigate to Rate, followed by the Play/Pause ►►/Power button ❸ to confirm.

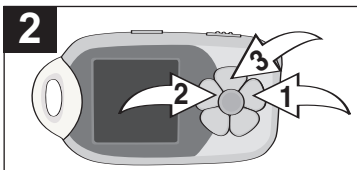
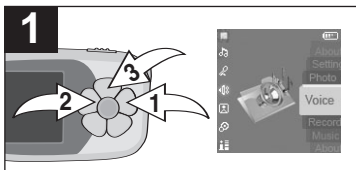
Use the Skip/Search ►► ❶ or ◀◀ ❷ button to select a Rate option (8000Hz, 16000Hz or 22050Hz), followed by the Play/Pause ►►/Power button ❸ to confirm.

NOTES:

- Press the Menu button repeatedly to exit the menus.
- A high record sampling frequency indicates a high quality in sound but also an increase in memory usage.

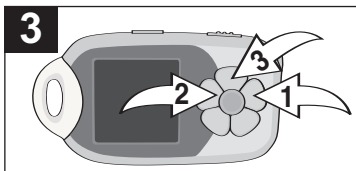
OPERATION (CONTINUED)

TO LISTEN TO A RECORDING



With the unit on (see page 14), use the Skip/Search **▶▶** ❶ or **◀◀** ❷ button to navigate to Voice, followed by the Play/Pause **▶||**/Power button ❸ to confirm.

Use the Skip/Search **▶▶** ❶ or **◀◀** ❷ button to navigate to the desired file, followed by the Play/Pause **▶||**/Power button ❸ to confirm; a pop-up menu will appear.

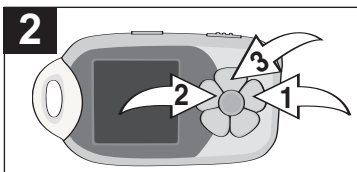
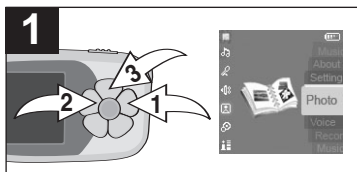


Select the desired option from the pop-up menu: Play (to begin playback), Delete (to delete your selection) or Cancel (to cancel your selection) by pressing the Skip/Search **▶▶** ❶ or **◀◀** ❷ button, followed by the Play/Pause **▶||**/Power button ❸ to confirm.

NOTE: If you select "Delete", you can then select "Yes", "No" or "Cancel" by pressing the Skip/Search **▶▶** or **◀◀** button, followed by the Play/Pause **▶||**/Power button to confirm.

OPERATION (CONTINUED)

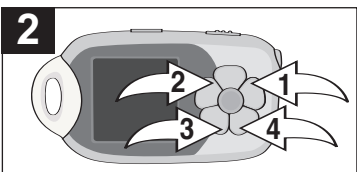
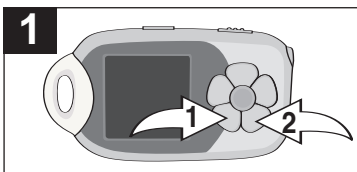
TO VIEW PHOTOS—This unit supports JPEGs and BMPs.



With the unit on (see page 14), use the Skip/Search **▶▶** ❶ or **◀◀** ❷ button to navigate to Photo, followed by the Play/Pause **▶||**/Power button ❸ to confirm.

Use the Skip/Search **▶▶** ❶ or **◀◀** ❷ button to select between Manual, Slide Show and Thumbnail viewing modes, followed by the Play/Pause **▶||**/Power button ❸ to confirm.

ZOOM IN/OUT



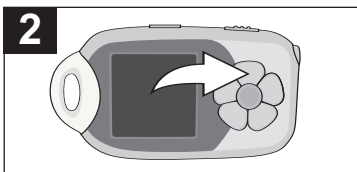
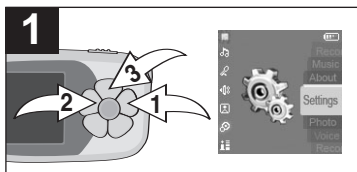
If you have selected Manual mode in Step 2 above, you can zoom in/out on your photos by pressing the Volume + ❶ or - ❷ buttons.

While in Zoom mode, you can also move your photo right and/or left by pressing and holding the Skip/Search **▶▶** ❶ or **◀◀** ❷ button, or up and/or down by pressing and holding the Volume + ❸ or - ❹ buttons.

NOTE: Photos must be saved in the Photo folder. Otherwise, you will not be able to view them. If this unit is recognized as a “MTP Player” by your computer, the Photo folder can be found in the Data folder; see page 12.

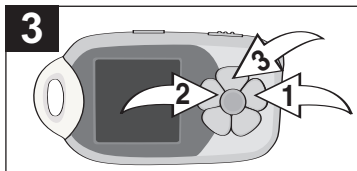
OPERATION (CONTINUED)

SETTING THE BRIGHTNESS



With the unit on (see page 14), use the Skip/Search **1** or **2** button to navigate to Settings, followed by the Play/Pause **3** button to confirm.

Press the Play/Pause **3**/Power button to select Brightness.



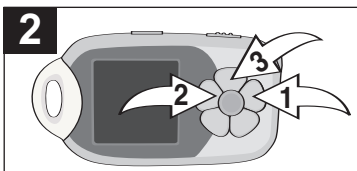
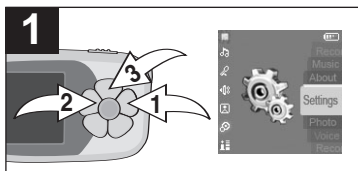
Use the Skip/Search **1** or **2** button to select a brightness level between Low, Mid and High, followed by the Play/Pause **3** button to confirm.

NOTE:

- Press the Menu button repeatedly to exit the menus.

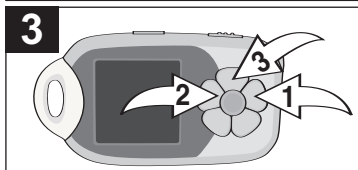
OPERATION (CONTINUED)

SETTING THE SCREEN SAVER



With the unit on (see page 14), use the Skip/Search **⏮** ❶ or **⏭** ❷ button to navigate to Settings, followed by the Play/Pause **⏸**/Power button ❸ to confirm.

Use the Skip/Search **⏮** ❶ or **⏭** ❷ button to select SCREEN SAVER, followed by the Play/Pause **⏸**/Power button ❸ to confirm.



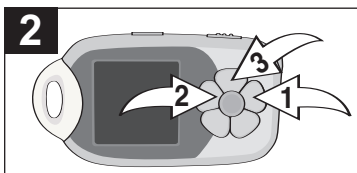
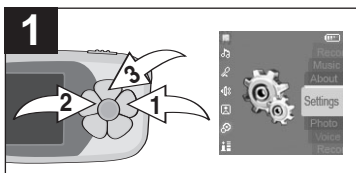
Use the Skip/Search **⏮** ❶ or **⏭** ❷ button to select the desired screen saver activation time (select OFF to keep the screen light always on) followed by the Play/Pause **⏸**/Power button ❸ to confirm.

NOTE:

- Press the Menu button repeatedly to exit the menus.

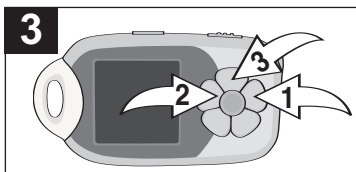
OPERATION (CONTINUED)

SETTING THE POWER SAVINGS



With the unit on (see page 14), use the Skip/Search **▶▶** ❶ or **◀◀** ❷ button to navigate to Settings, followed by the Play/Pause **▶||**/Power button ❸ to confirm.

Use the Skip/Search **▶▶** ❶ or **◀◀** ❷ button to select Power Savings, followed by the Play/Pause **▶||**/Power button ❸ to confirm.



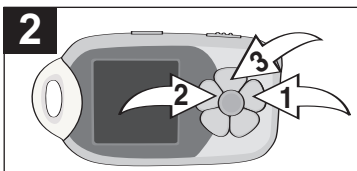
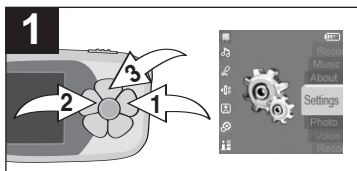
Use the Skip/Search **▶▶** ❶ or **◀◀** ❷ button to select the desired Power Savings time (the unit will stay on before turning off due to inactivity), followed by the Play/Pause **▶||**/Power button ❸ to confirm.

NOTES:

- Select OFF to disable this feature and not have the unit enter the Power Savings mode.
- Press the Menu button repeatedly to exit the menus.

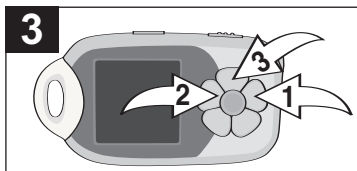
OPERATION (CONTINUED)

SETTING THE PHOTO SLIDE TIME



With the unit on (see page 14), use the Skip/Search **⏮** ② or **⏭** ① button to navigate to Settings, followed by the Play/Pause **▶||**/Power button ③ to confirm.

Use the Skip/Search **⏮** ② or **⏭** ① button to select Photo Slide Time, followed by the Play/Pause **▶||**/Power button ③ to confirm.



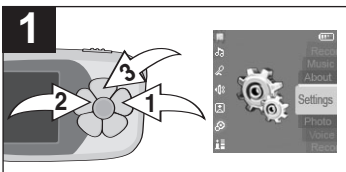
Use the Skip/Search **⏮** ② or **⏭** ① button to select the desired Photo Slide time (will stay on the display when in Slide Show mode), followed by the Play/Pause **▶||**/Power button ③ to confirm.

NOTE:

- Press the Menu button repeatedly to exit the menus.

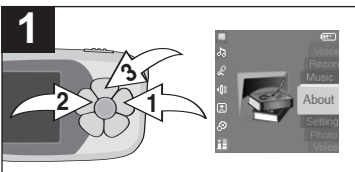
OPERATION (CONTINUED)

TO RESTORE DEFAULT SETTINGS



Enter the Settings menu (see Step 1, previous page). Use the Skip/Search **▶▶** ❶ or **◀◀** ❷ button to select Default, followed by the Play/Pause **▶||**/Power button ❸ to confirm; the unit will restore the default settings immediately.

TO VIEW THE SYSTEM INFO



With the unit on (see page 14), use the Skip/Search **▶▶** ❶ or **◀◀** ❷ button to navigate to About, followed by the Play/Pause **▶||**/Power button ❸ to confirm. The Firmware Version, Internal Media and Free Memory Space will appear.

NOTE: Press the Menu **M** button repeatedly to exit the menus.

FORMATTING THE PLAYER

WARNING! Do not format this player unless it stops working and you are instructed to do so by technical support personnel.

To format this unit, connect it to your computer as previously described and use the Windows format tool.

IMPORTANT:

- Do not select NTFS from the File System menu. If you do, the MP3 Player will not work and will need to be formatted again.
- Please back-up the files on this unit before formatting.

UPDATING THE FIRMWARE

WARNING! Do not update the firmware unless you are experiencing problems with your digital audio device. Incorrect or faulty firmware installation will cause the player to stop functioning.

You can download the updated firmware:
www.emersonradio.com/BAR900/Update

RESETTING THE UNIT

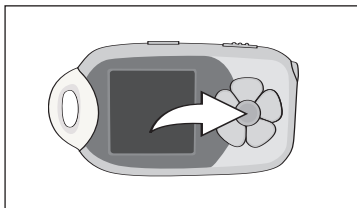
If the unit acts erratically, reset the unit by inserting a thin object (such as a paper clip) into the recessed RESET Access. See page 6 for the Reset hole's location.

OPERATION (CONTINUED)



Barbie™ has a surprise just for you! Just follow the instructions below and see what you can do with your GEMSTONE FUN button!

Step 1



Press and hold the GEMSTONE FUN button on your MP3 player.

Step 2



SURPRISE! With your GEMSTONE FUN button, you can start creating a voice recording right away! Just speak or sing into the MIC (microphone) on the bottom of your MP3 player.

NOTE:

Please see pages 21-23 for more information about voice recordings.

Barbie™ has another surprise for you! Included on your Petal MP3 Player™ are these four songs:

- Hope Has Wings
- B A R B I E
- Where'd You Get That
- Style It Up

NOTE: These songs are protected and can't be deleted from the MP3 player. The songs will only show up on the MP3 player, they can't be downloaded via a computer.

TROUBLESHOOTING GUIDE

If you experience a problem with this unit, check the chart below before calling for service.

SYMPTOM	CAUSE	SOLUTION
Unit will not turn on.	Battery is low/empty.	Recharge battery.
	Unit is not turned on.	Press Play/Pause ► /Power button to turn the unit on.
No sound.	Headphones are not inserted.	Insert headphones.
	Volume is set too low.	Raise the volume using the Volume + button.
	The MP3 or WMA files are corrupted.	Download uncorrupted files.
	No files are in the player.	Upload files to the unit as described on pages 9-12.
The computer is not recognizing the player.	The player is not securely connected.	Make sure player is securely connected.
	Computer is not compatible.	Supported OS: Windows ME, 2000, XP, Vista or Mac 9.2X
WMA files with DRM can't playback.	Incorrect downloading methods.	See page 12 to download WMA files with DRM.
No buttons work.	The Hold feature is activated.	Deactivate Hold feature as described on page 14.
	Unit needs to be reset or firmware needs to be updated.	Reset unit and/or update firmware, see page 29.
Unit acting erratically.	Unit needs to be reset or firmware needs to be updated.	Reset unit and/or update firmware, see page 29.

**EMERSON RADIO CORP.
LIMITED WARRANTY (Valid in the United States)**

Emerson Radio Corp. warrants manufacturing defects in original material, including original parts and workmanship, under normal use and conditions, for a period of ninety (90) days from the date of original purchase in the U.S. With your dated proof of purchase, we will provide repair service at no charge for labor and parts at an authorized Depot Repair Facility, or replace the product in our discretion. For repair or replacement, pack your unit in a padded box, enclose your check or money order payable to Emerson Radio Corp. in the amount of \$9.00 (not required by California residents) to cover shipping and handling costs, and enclose a copy of your proof of purchase. Send your unit to:

Emerson Radio Corp.
5101 Statesman Drive
Irving, TX 75063

This warranty does not cover damage from negligence, misuse, abuse, accident, failure to follow operating instructions, commercial use, rental, repairs by an unauthorized facility, or products purchased, used, serviced or damaged outside of the United States.

THIS WARRANTY GIVES YOU SPECIFIC LEGAL RIGHTS, AND YOU MAY ALSO HAVE OTHER RIGHTS WHICH VARY FROM STATE TO STATE.

AU898M

The serial number of your system is located on a label on the bottom cabinet. Please take a moment now to locate the serial number and write the number in the space provided below. You may be asked to provide this number when calling for product service.

Model Number: **BAR900**
Serial Number: _____

 Emerson SERVICE	TO FIND THE LOCATION AND PHONE NUMBER OF YOUR NEAREST SERVICE CENTER PERMITTED TO PERFORM WARRANTY...
CALL TOLL FREE: 1-800-695-0098	
FOR ADDITIONAL SET-UP OR OPERATING ASSISTANCE PLEASE CALL: 1-800-898-9020	
FOR CUSTOMER SERVICE, PLEASE WRITE TO: Emerson Radio Corp., Consumer Affairs Dept., 5101 Statesman Drive, Irving, TX 75063.	

EMERSON® WARRANTY (Valid in Canada)
Consumer Electronics, Home Appliances and Home Office Products

Thank you for choosing EMERSON®!

SYNNEX Canada Limited gives the following express warranty to the original consumer purchaser or gift recipient for this EMERSON product, when shipped in its original container and sold or distributed in Canada by SYNNEX Canada Limited or by an Authorized EMERSON Dealer:

SYNNEX Canada Limited warrants that this product is free, under normal use and maintenance, from any defects in material and workmanship. If any such defects should be found in this product within the applicable warranty period, SYNNEX Canada Limited shall, at its option, repair or replace the product as specified herein. Replacement parts furnished in connection with this warranty shall be warranted for a period equal to the unexpired portion of the original equipment warranty.

This warranty shall not apply to:

- a. Any defects caused or repairs required as a result of abusive operation, negligence, accident, improper installation or inappropriate use as outlined in the owner's manual.
- b. Any EMERSON product tampered with, modified, adjusted or repaired by any party other than SYNNEX Canada Limited or EMERSON'S Authorized Service Centres.
- c. Damage caused or repairs required as a result of the use with items not specified or approved by SYNNEX Canada Limited, including but not limited to head cleaning tapes and chemical cleaning agents.
- d. Any replacement of accessories, glassware, consumable or peripheral items required through normal use of the product including but not limited to earphones, remote controls, AC adapters, batteries, temperature probe, stylus, trays, filters, cables, paper, cabinet, cabinet parts, knobs, buttons, baskets, stands, shelves, cookware and cooking utensils.
- e. Any cosmetic damage to the surface or exterior that has been defaced or caused by normal wear and tear.
- f. Any damage caused by external or environmental conditions, including but not limited to transmission line/power line voltage or liquid spillage.
- g. Any product received without appropriate model, serial number and CSA /cUL /cULus /cETL /cETLus markings.
- h. Any products used for rental or commercial purposes.
- i. Any installation, setup and/or programming charges.

Should this EMERSON product fail to operate during the warranty period, warranty service may be obtained upon delivery of the EMERSON product together with proof of purchase and a copy of this LIMITED WARRANTY statement to an Authorized EMERSON Service Centre. This warranty constitutes the entire express warranty granted by SYNNEX Canada Limited and no other dealer, service centre or their agent or employee is authorized to extend, enlarge or transfer this warranty on behalf of SYNNEX Canada Limited. To the extent the law permits, SYNNEX Canada Limited disclaims any and all liability for direct or indirect damages or losses or for any incidental, special or consequential damages or loss of profits resulting from a defect in material or workmanship relating to the product, including damages for the loss of time or use of this EMERSON product or the loss of information. The purchaser will be responsible for any removal, reinstallation, transportation and insurance costs incurred. Correction of defects, in the manner and period of time described herein, constitute complete fulfillment of all obligations and responsibilities of SYNNEX Canada Limited to the purchaser with respect to the product and shall constitute full satisfaction of all claims, whether based on contract, negligence, strict liability or otherwise.

CARRY-IN PARTS & LABOUR WARRANTY PERIODS:

- Audio Products: 1 Year (Remote Control, if applicable – 90 Days)
- Home Appliances: 1 Year
 - Microwave Magnetron parts only additional 3 Years
 - Refrigerator / Freezer Compressor parts only, additional 4 years
- Home Office Products: 1 Year

To obtain the name and address of the nearest Authorized EMERSON Service Centre or for more information on this warranty

- visit www.emersonelectronics.ca
- mail your inquiry to: SYNNEX Canada Limited, EMERSON Customer Service
200 Ronson Drive, Toronto, ON M9W 5Z9, or
- call toll free 1-800-663-5954, Monday to Friday 9:00am – 5:00pm Eastern Standard Time.

08.2007

